

R-System R1

A-Series

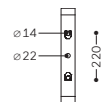
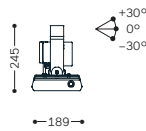
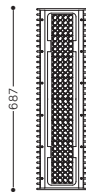


R1

R1

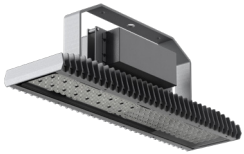
7.5 kg
+ 3 kg Driver

↓ $\text{①} = 0.13$
→ $\text{②} = 0.05^* / 0.08^{**}$



Model	Luminous Flux [lm] ③	Max. Power [W]	Current Feed [mA]	LEDs
R1 (A-Series)	35,888	273	700	128

Models / Equipment Variations



R1 (driver installed)



R4 (driver external)

- System accommodates 1 panel
- Current feed: 400-700 mA, depending on ambient temperature
- Allowed ambient temperature range: -40 to +55 °C
- Lifetime: L90B10 > 60,000 h
- System efficacy: 110-145 lm/W
- Electronic operating device with DALI; each panel one DALI address
- Smart Lighting: control modules for different communication standards available upon request
- Various light distributions for large-area, high bay or street lighting
- Lens made from PMMA, cover in single-pane safety glass (ESG)
- Luminaire housing in die-cast aluminium
- Bracket made of hot-dip galvanised steel, holder made of aluminium
- Finish: polyester powder coating, white aluminium (RAL 9006 / DB 701)

IP66 RoHS IK08



Colour Temperatures

3,000 K 4,000 K 5,700 K

Standard CRI ≥ 70, CRI ≥ 80 upon request

Light Distributions (also available in satiné version – spot optics excluded)

